



Powered by
 **HyVibe**

LÂG/HYVIBE

THE NEXT GENERATION OF ACOUSTIC GUITARS

Acoustic

Acoustic Electric

Smart Guitar

“It just sounds amazing. This is really just an incredible innovation.”

- Guitar World Magazine

“HyVibe gives its acoustic guitar some digital smarts.”

- New Atlas

“HyVibe is committed to revolutionizing the acoustic guitar industry with an attractive connected instrument.”

- Musicradar

It is not surprising that at a time when standard telephones have evolved into power smartphones, an identical digital phenomenon would finally happen to the acoustic guitar.

By combining Doctor Adrien Mamou Mani's 7+ years of research at the famous IRCAM institute in Paris, with 40 years of guitar manufacturing expertise, Lâg offers all guitar lovers a new category of instruments providing the best in technology and lutherie design.

The Lâg HyVibe Smart Guitars revolutionize the relationship between guitarists and their favorite instrument. It becomes an ideal tool that accompanies them on a daily basis, transcending how they create music.

Playing the acoustic guitar will never be the same

10 REASONS TO PLAY THE LÂG/HYVIBE SMART GUITAR



High quality acoustics

The HyVibe system comes embedded into three special Lâg Tramontane models, built under the supervision of acclaimed French luthier Maurice Dupont.

In order to make the most out of the HyVibe System, Maurice designed a unique bracing specially for these guitars that produces a rich range of tones and excellent sound quality



Self amplification from vibration

Use all the features, effects and play over your favorite songs or backing tracks using the bluetooth speaker function, all without wires or cables, easily and directly through your guitar



Multi-effects processor

Self-amplify customizable guitar effects such as chorus, reverb, distortion, phaser, pitch-shifter, tremolo, acoustic boost, etc. directly from the body of the guitar.

No pedals, speakers or wires are needed anymore!

Play with these built-in effects as well when you are plugged into an amp or a PA system



Bluetooth speaker

The HyVibe System transforms the top of the guitar into a speaker membrane, turning the guitar body into a connected speaker that amplifies audio from your smartphone, PC, tablet, etc.

Stream from YouTube, Spotify, iTunes and even Skype!



Loop, record and share

Experience the fun of creating loops and jamming over them, directly through the guitar.

Instantly record new song ideas and share them with your friends (8GB of storage)



HyVibe mobile app

Use the HyVibe mobile app to customize your effects, shape your sound, record your playing, activate the looper and much more



Programmable EQ with tuner

The Lâg HyVibe comes complete with a fully programmable (via the HyVibe mobile app) and powerful 7 band EQ to shape your sound just as you want it. The guitar also has a built-in digital chromatic tuner



Metronome

Use the integrated metronome to train and practice your rhythm.

The easily programmable rhythm motifs cover all musical styles



Long life battery

The extended long life battery allows you to play, loop and stream for up to 10 hours/charge

You can charge it easily thanks to its USBC charging port, or use a power bank away from home and play while it is charging

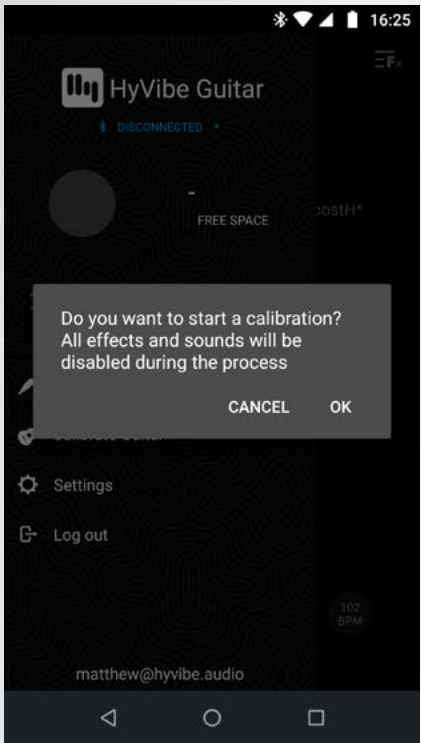


Standard output and input jacks

Use all the features through an amp or a PA system thanks to the output jack, allowing on stage performance. Input jack for external devices is also included (pedals, PC, etc.)

A NEW WORLD FOR THE ACOUSTIC GUITAR PLAYER:

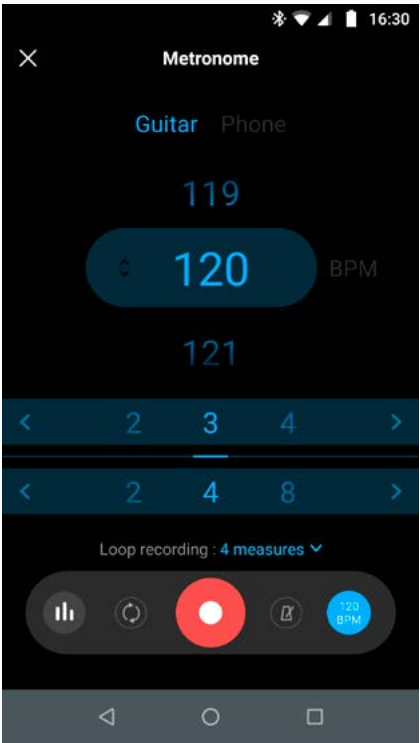
THE HYVIBE MOBILE APP



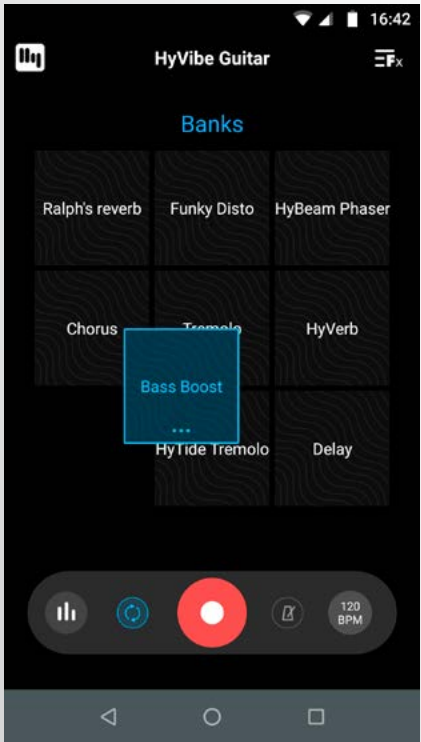
Calibrate the guitar



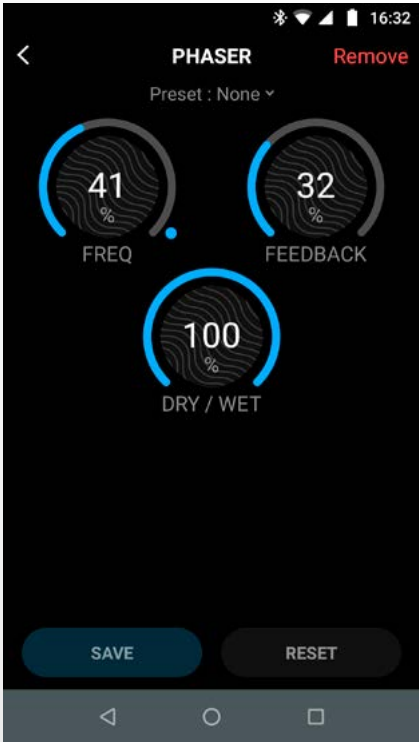
Shape your sound



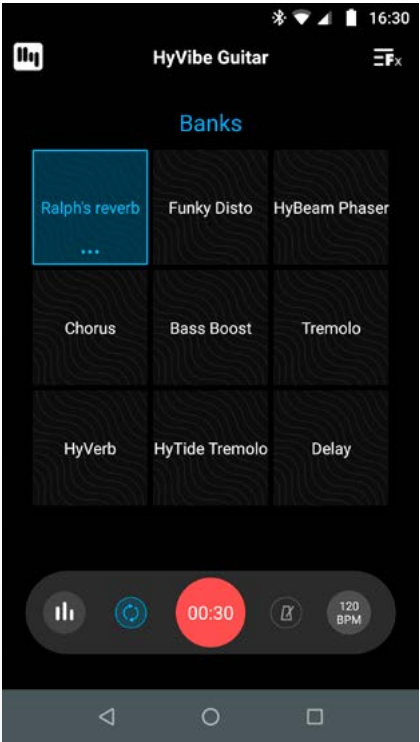
Control the metronome



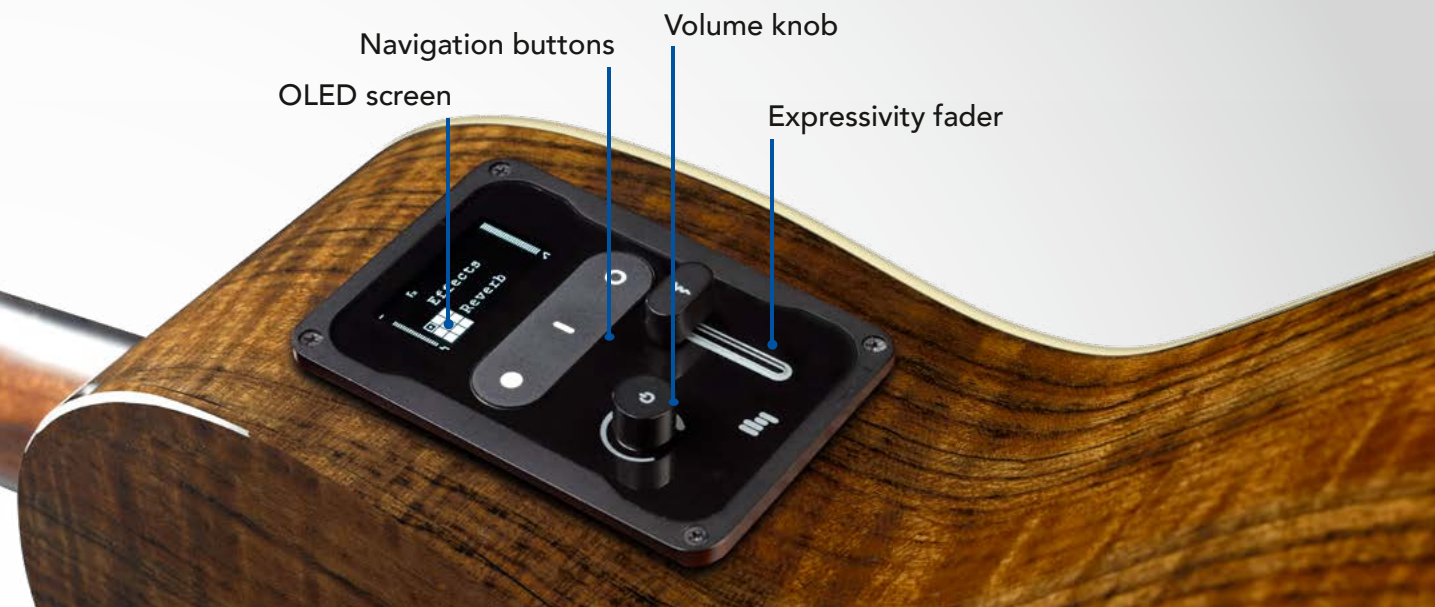
Select and modify effect banks



Customize your effects



Activate the looper and record your playing



HOW THE HYVIBE SYSTEM WORKS

HyVibe's proprietary technology is used to turn the acoustic guitar into its own speaker, amplifier and effects processor. Our system uses smart, connected vibration technology, combining a sensor, a high-performance processor and actuators to constantly excite, measure and transform the resonances of the guitar's body. This results in a superior, augmented experience that you can feel.

Sensor

A highly sensitive piezo sensor located under the saddle picks up the signal from the strings and sends it to the processor



Processor

The low-latency system of the HyVibe processor takes the signal from the sensor, adjusts the sound, cancels feedback and sends the signal back to the actuators



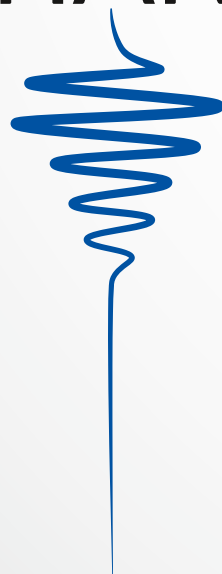
Actuators

Actuators are located below the top of the guitar, underneath the bridge. This provides the purest acoustic sound from the natural resonances of the guitar



INTRODUCING THE LÂG/HYVIBE SMART GUITAR

PRACTICE
CREATE
PERFORM
FEEL YOUR SOUND
CONNECT
SHARE



EVERYWHERE



THV10DCE



All the basics Lâg knows and a bit more... The Lâg THV10DCE packs a lot of warmth and deepness into a comfortable, easy to play guitar. This huge amount of warmth is brought up by its solid red Cedar top, which is nicely paired with the Mahogany body. The typical Venetian cutaway opens up to its slim neck and Brownwood fretboard and offers you a smooth playing experience. Specially designed bracing inside the guitar is able to pick up every little detail of your playing style and make them sound wonderful.

Body

Top: solid red Cedar
Back & sides: Khaya Mahogany
open pore
Finish: satin
Bridge: Brownwood
Saddle: compensated black
graphite / 72 mm

Neck

Neck: Khaya Mahogany open pore
Finish: satin
Fingerboard: Brownwood
Frets: 20 – silver nickel
Scale: 650 mm
Headstock: Brownwood

Hardware

Machine heads: die cast / satin black
Nut: black graphite / 43 mm

Electronics

HyVibe System

Available in left handed



20th HyVibe TRAMONTANE

The THV20DCE gives all the guitarists an open road to explore all the possibilities the HyVibe system can offer. The guitar features a solid Engelmann Spruce top, well known in the guitar world for its combination of strength and elasticity that translates into a full and rich sonic range. The THV20DCE allows every kind of playing from aggressive strumming to delicate fingerpicking; its Lâg signature thin-profile neck makes the guitar even more versatile. All these specifications combined with the specially selected Ovangkol back & sides create a guitar not only visually appealing but with a wide and precise projection.

Body

Top: solid Engelmann Spruce
Back & sides: Ovangkol
Finish: glossy
Bridge: Brownwood
Saddle: compensated black graphite / 72 mm

Neck

Neck: Khaya Mahogany open pore
Finish: satin
Fingerboard: Brownwood
Frets: 20 – silver nickel
Scale: 650 mm
Headstock: Brownwood

Hardware

Machine heads: die cast / satin black
Nut: black graphite / 43 mm

Electronics

HyVibe System

Hardshell case included

Available in left handed



THV20DCE

30th HyVibe TRAMONTANE

The THV30DCE abounds with refined details and sonic optimizing features: every piece of wood is carefully selected for its tonal characteristics and aesthetic properties. The top is carved out of a specially selected bearclaw Spruce, which takes the sonic print of Sitka spruce and expands it thanks to its higher stiffness. Together with the breathtaking deep-hued Bocote body, the THV30DCE turns out to be a guitar that is incredibly responsive, with full and rich midrange and impressive sustain. Once again, all this would be nothing without a great playability: cutaway, Lâg slim neck profile, Blackwood fingerboard, all those features do not make this guitar only easy and pleasant to play, but mostly unique.

Body

Top: solid bearclaw Spruce
Back & sides: figured Bocote
Finish: glossy
Bridge: Blackwood
Saddle: compensated black graphite / 72 mm with pearl inlaid pins

Neck

Neck: Khaya Mahogany open pore
Finish: satin
Fingerboard: Blackwood
Frets: 20 – silver nickel
Scale: 650 mm
Headstock: Blackwood

Hardware

Machine heads: die cast / satin black
Nut: black graphite / 43 mm

Electronics

HyVibe System

Hardshell case included



THV30DCE



Dr Adrien Mamou-Mani serves as co-founder and CEO of **HyVibe**. Prior to creating HyVibe, he was the lead researcher for the Ircam Instrumental Acoustics team. He holds a PhD in Acoustics and Mechanics from the University Pierre et Marie Curie (Paris) and has been a post-doctoral researcher at the Paris Philharmonic Museum (Paris) and at the Open University Acoustics Laboratory United Kingdom as Newton Fellow. Adrien is recognized as a world expert in vibration and control of musical instruments. He is also a cellist and has been known to play guitar and sing in rock clubs around Paris!

lagguitars.com

HyVibe is a registered trademark owned by HyVibe SA.
The HyVibe System uses proprietary technology owned by HyVibe SA. Patents pending.